



## 2017 Board of Directors

**Linda Noto,**  
Chairman

**Peggy Turnbull,**  
Vice-Chairman

**Jamie Thomas,**  
Secretary/Treasurer

**Andrea Hadley**

**Glen Kirkland**

**Stacie Popien**

**John Quail**

**Liz Roberts**

**Val Rochelle**

**Brian Schoonbaert**

(Ex-Officio)

**Jenn Shields**

**Kathy Ward**



150 McTavish Avenue East  
Brandon, MB R7A 2B3  
Phone: 204-578-4227  
Fax: 204-578-4967  
email: [info@brhcfoundation.ca](mailto:info@brhcfoundation.ca)

Visit us at

## 2016 GALA CONTRIBUTES TO PATIENT CARE



*Linda Noto, Chairman, Foundation Board of Directors, receives 2016 proceeds from (R) Jill Stewart, Gala Committee Chairman*



*2016 Gala Committee (L-R): Dr. Savitri Ramaya, Cheryl Nelson, Peggy Turnbull, Jill Stewart (Chairman), Kirsten Turcotte, Brett Kennedy, Kelly Lumbard, Brenda Burgess, Barb Webber, Nikki Maduke, Dr. Kelby Treloar (Missing from photo: Sally Mott)*

Gala 2016, held September 24 at the Victoria Inn, was another resounding success with proceeds of \$53,230! Gala-goers enjoyed a champagne reception, gourmet meal, prizes, silent and live auctions, and danced the night away to the music of The Ron Paley Band.

The proceeds will be used to purchase a bipap unit (helps patients breathe) for the ICU (Respiratory Program), two slim line hysteroscopes for the gynecology program, and the balance to the Pediatrics/NICU Departments for the purchase of equipment.

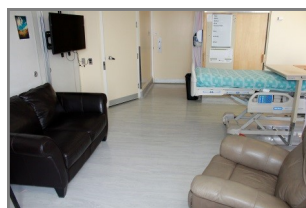
Thank you to everyone who supported and attended this 26th annual Gala event. Proceeds over the past 26 years of Gala dinners have now reached more than \$731,000.

Planning for 2017 has begun and we anticipate another sold out event so get your tickets early! As of May 10, tickets can be purchased on line at [www.brhcfoundation.ca](http://www.brhcfoundation.ca)

Sponsorship opportunities are still available; please contact the Foundation office at 204-578-4227 for more information.

## THANK YOU TO OUR DONORS

### PALLIATIVE CARE DONATIONS ENHANCE PATIENT COMFORT



In 2016, the Palliative Care Restricted Fund was used to purchase a significant number of items for this special area of the hospital, located on the 3<sup>rd</sup> floor of the Assiniboine Centre.

\$181,900, representing cumulative donations to the fund, was used to purchase twelve Versa Care beds for the unit's single rooms. These beds are designed to provide

enhanced care as their systems assist with fall prevention and skin management programs. They have a low bed height, low chair position capability, adjustable bed length, point-of-care side rail controls, patient position monitoring/bed exit system and each bed has a built in air mattress for maximum comfort and pressure relief. These beds will provide the utmost in care in comfort.

As well in 2016, two patient rooms in the unit were completely refurbished including a loveseat and recliner chair, end table, lamp, and a ceiling mounted flat screen television. A mechanical lift was also purchased for the unit and a hallway sitting area received several new chairs.

Heather Grimshaw, Nursing Program Manager of the unit, shared, "All of the patients and their family members coming to A3 Palliative Care will benefit from these additions".

Thank you to the many donors and families for their tributes and donations that have enabled the Foundation to fund the purchase of these items for the Palliative Care area.



## FOUNDATION BOARD EXTENDS SINCERE APPRECIATION



(L-R) Back: Glen Kirkland, Peggy Turnbull, Brian Schoonbaert, Jamie Thomas  
Middle: Stacie Popien, Jenn Shields, Val Rochelle, Linda Noto (Chairman)  
Seated: John Quail, Andrea Hadley, Kathy Ward (missing: Liz Roberts)

The Foundation Board of Directors would like to take this opportunity to extend sincere thanks to our generous donors. Great care is taken with each and every donation to ensure that your investment in the healthcare of this community is managed appropriately.

We are committed to solid governance principles, the basis upon which the trust of donors is established and maintained. These principles are critical to the growth and reputation of the Foundation.

Your support and trust are our greatest assets. Thank you for making a difference.

*"Managing your gifts to improve patient care and to support healthcare needs in the regional community"*

### THANK YOU



#### "HOLIDAY AROUND THE WORLD" 2016 RAFFLE WINNER

Congratulations to Janet Lettley of Brandon, the lucky winner of our 2016 WestJet "Holiday Around the World" fundraising raffle. On December 22, Shannon Mannall, Brandon's WestJet Manager, made the draw in the atrium of the BRHC and announced that Janet was the winner of a return flight for two anywhere WestJet flies.

Over \$9,000 was raised from the raffle that will be used for the purchase of equipment for the Peds/NICU Departments at the BRHC.

Many thanks to WestJet for their generous, ongoing support, and to everyone who supported this initiative.



(L-R): Linda Noto, Chairman, Foundation Board of Directors, presents Janet Lettley with the WestJet gift of flight with Cindy Buizer, Foundation Executive Director



(L-R): Cindy Buizer, Shirley Derham, Jeanette Nykoliation, Barb Wilson with Kim Wallis, Dialysis Manager

#### NAOMI REBEKAH LODGE #6 AND BRANDON CITY LODGE #6

Cindy Buizer, the Foundation's Executive Director, is honored to accept a joint donation in the amount of \$6,000 from the Naomi Rebekah Lodge No. 6, and the Brandon City Lodge No. 6, Independent Order of Odd Fellows. A "Fresenius" chair, specific for use by dialysis patients, has been purchased in memory of Lyall Wilson, Past Grand Master of Manitoba, who was a dialysis patient in Brandon for several years.

Dialysis patients spend many hours each week undergoing dialysis and ensuring their comfort during treatment is a priority. This special chair contributes to enhanced care by offering the patient a number of sitting/lying options while ensuring patient and nurse safety in emergency situations.

#### RBC ROYAL BANK'S AWARD WINNER JACKIE WELLS

The Foundation is pleased to share that RBC employee Jackie Wells, winner of RBC's Community Leadership Award, directed her donation to the Foundation for the Palliative Care Unit at the BRHC, in memory of her mother Margery Ruth Nicol, and dear friend Donna Hamm.

Jackie is the Brandon RBC Royal Bank Executive Assistant and former Manager of Client Care at the 18<sup>th</sup> and Van Horne Avenue branch. She shared, "Over the past two years I have had to say good-bye to my mother and dear friend in the Palliative Care Unit at the BRHC. Having a place that is private, comfortable, and peaceful to maneuver through this process is invaluable to families and their loved ones at such a difficult time. I would encourage anyone who has the opportunity to give back to the Palliative Care Unit, to do so!"

In Manitoba, Saskatchewan and Northwest Ontario, RBC awards the prestigious Regional President's Community Leadership Award to compassionate, energetic, and enthusiastic employees who demonstrate outstanding volunteerism. These special individuals are nominated by their peers and leaders, and recipients are selected by a committee led by RBC's Regional President. Each award recipient receives a unique glass award and is honored with \$1,000 from RBC Foundation that is directed to the recipient's charity of choice.



(L) Jackie Wells, RBC, presents the cheque to Cindy Buizer, Foundation Executive Director



### IRENE WOTTON WARMS HEARTS AND SOULS

The Foundation extends a warm thank you to Irene Wotton for her generous donation of \$5,100 for the purchase of a blanket warmer for the Palliative Care Unit. A blanket warmer is appreciated by anyone receiving a cozy warm blanket - a wonderful care and comfort item for patients in Palliative Care.

This donation was made by Irene in loving memory of her husband Ralph who passed away in June of 2015. Ralph and Irene were married for 66 years.

### NIFTY NEEDLERS

Thanks to the creative hands of the Nifty Needlers, the Foundation received \$2,000 for new furniture in the Surgical Suite family wait room at the BRHC. This wonderful donation represents the proceeds of their 2016 quilt raffle draw held in April of 2016. This donation brings the total amount donated to the Foundation by the Nifty Needlers to an incredible \$33,813.

This quilting group, made up of women from Brandon and surrounding communities, meets regularly to share their love of quilting and sewing. Thank you Nifty Needlers for helping us make a difference!



(L-R): Barb Walker, Nifty Needlers Treasurer, presents the cheque to Cindy Buizer, Foundation Executive Director with Nifty Needler Bev Morrice



### ENBRIDGE PIPELINES INC.

Wayne Gabrielle, Enbridge Pipelines Inc. employee of 32 years, presents Cindy Buizer, Foundation Executive Director, with a donation in the amount of \$1,000. This generous donation was directed to the Murray House cancer treatment residence. The Murray House Residence is a home away from home for people undergoing cancer treatments at the Western Manitoba Cancer Centre in Brandon.

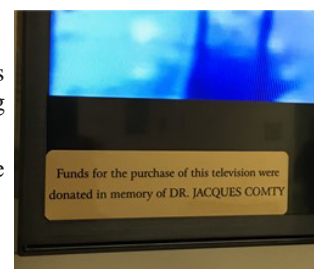
Thank you to Enbridge Pipelines Inc. for this support that will ensure the needs of those using Murray House will continually be met.

### FLAT SCREEN TELEVISIONS ADDED TO DI WAITING AREAS

Thanks to a very generous anonymous donor, three waiting rooms in the Diagnostic Imaging Services area have received new, large, flat screen televisions. The MRI, CT, and Mammography waiting rooms now host these lovely units that include a tribute plate, as seen in the photo.

Dr. Comty was a Radiologist who practiced for many years at the Brandon Regional Health Centre until retiring in 1994. He passed away on February 22, 2016, at the age of 92.

This lovely tribute will be enjoyed by many for years to come.



### UNDER THE TREE OF LIGHTS DONOR GENEROSITY OVERWHELMING!

The annual "Tree of Lights" fundraiser, a wonderful and heartfelt way to remember and memorialize a loved one, or to honour someone special, was once again an incredible success in 2016! Following the Pancake Breakfast held December 2, the Trees of Lights in the traffic loop were turned on as donations were received. As well, personalized tree tags adorned our atrium "Tribute Tree".

For the first time this year, donors could direct their donation toward one of the three gifts "Under the Tree of Lights". These items were carefully selected from the BRHC's Wish List, hoping to raise \$15,000. We were so overwhelmed with the \$30,609 that was received that we were able to purchase the three items and more! To see what else community donations helped the Foundation to purchase in 2016, see the back page ~

*With Sincere Appreciation...*



### GERMAN SOCIETY OF WESTMAN

Linda Noto, Chairman, Foundation Board of Directors, says "Danke", thank you in German, to the German Society of Westman, President Manfred Wicht, for their donation in the amount of \$1,000. This generous donation has been designated to Palliative Care Unit at the BRHC.

Continued support from the community, such as this, will help the Foundation make a difference in meeting the healthcare needs at the BRHC.



*Our tribute list (donations made in memory or honor of loved ones) can be found on our website at [www.brhcfoundation.ca](http://www.brhcfoundation.ca)*



## MESSAGE FROM OUR EXECUTIVE DIRECTOR - Cindy Buizer

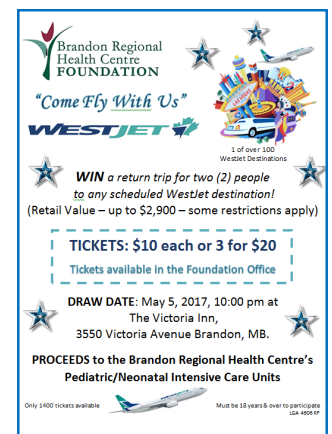


Since joining the BRHC Foundation in 2010, I continue to be amazed at the generosity we receive from this community. Donations from individuals, community groups, third party events, tributes, bequests, and support of our fundraising events, campaigns, and activities, all contribute to the wonderful care provided at the BRHC. Every patient at the BRHC is touched by something funded by this Foundation during their healthcare journey! You are receiving this newsletter as the result of your support - our way of keeping you up to date on what is happening in the Foundation.

Every donation made to the BRHC Foundation stays here! In 2016, the Foundation funded \$1.2 million in equipment purchases and program support! All for the benefit of the patients receiving care at the BRHC.

Also in 2016, we received a bequest from the estate of William and Mabel Elvers that was used to purchase scopes for the GI Unit. This type of giving is one of the many unique ways to donate and leave a lasting legacy. Please don't hesitate to contact me if you are interested in this type of planned giving, if you are planning a fundraising event or activity, or have a donation that you would like to discuss. My door is always open and I sincerely appreciate the opportunity to personally meet and thank our donors.

I would like to thank each and every one of our supporters, both past and present. Whether you donate to one of our campaigns, support our events, purchase raffle tickets, or have been a first time donor as the result of a new relationship with us, your gifts are helping us make a difference in the healthcare of all served by the Brandon Regional Health Centre.



## With Sincere Appreciation...

The Foundation Board of Directors would like to extend a sincere thank you to the individuals, organizations, and businesses in Brandon and throughout Western Manitoba who supported the Foundation in 2016. You are truly helping us make a difference in the healthcare of all served by the Brandon Regional Health Centre!

**Thanks to the generosity of our donors and our grant process, the BRHC Foundation was able to fund \$1,298,309.00 in equipment purchases and program support in 2016 including:**

- Bench and tree (tribute)
- Blood pressure monitors (3)
- Crib
- Electric beds (7)
- Hand held O2 Sat monitor
- Hand held O2 sat monitor
- Intravenous pumps
- Music to My Ears program funding
- Patient lift with scale
- Slim line hysteroscopes (2)
- Tables

- Bipap respiratory unit
- Cancer patient support funding
- Cuddle Cot
- Fleece for baby blankets
- Gaming systems for Pediatrics (3)
- High flow oxygen unit
- Jaundice meter
- Oxygen concentrators (2)
- Pressure mapping assessment tool
- Special air mattress
- Televisions for Dialysis Unit (4)

- Birthing beds (3)
- Colonoscopes (8)
- Dialysis chairs (2)
- Surg. Suite family room furniture
- Gastroscope
- Hover mat
- Laser safety inservice training
- Palliative Care beds (12)
- Sleep chairs for Pediatrics (3)
- Specialty chairs for NICU (3)
- Stryker transport stretcher

### Mission:

**To raise funds to support healthcare needs in the regional community**

**Brandon Regional Health Centre Foundation**  
150 McTavish Avenue East, Brandon MB R7A 2B3  
Phone: 204-578-4227  
email: [info@brhcfoundation.ca](mailto:info@brhcfoundation.ca)